

**AOC**

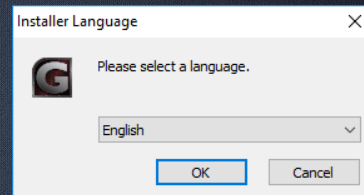
G-Menu



# G-Menu Installation Guide

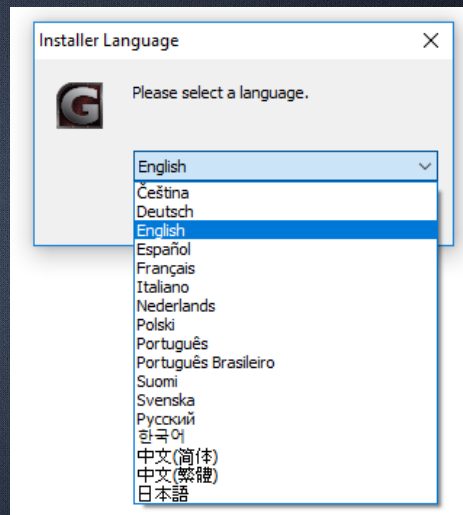
# Installer default language

- English is the default Language
- Click “OK” to proceed with installation
- “Cancel” prompts the user if they want to cancel the installation



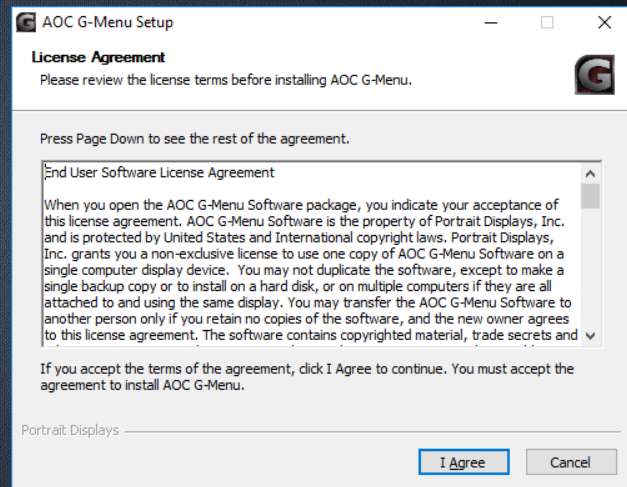
# Installer language select

- Selecting the language dropdown displays all supported languages.
- Select the desired language then select “OK” as described previously.



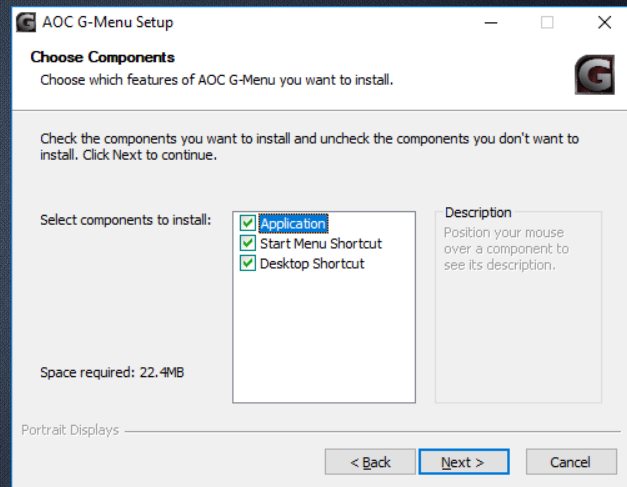
# End User License Agreement (EULA)

- Displays End User License Agreement (EULA) verbiage
- “I Agree”/”Cancel” buttons are available. By default “I Agree” is highlighted.
- Selecting “I Agree” accepts the license agreement and proceeds with the installation
- Selecting “Cancel” prompts the user if they want to cancel the installation.



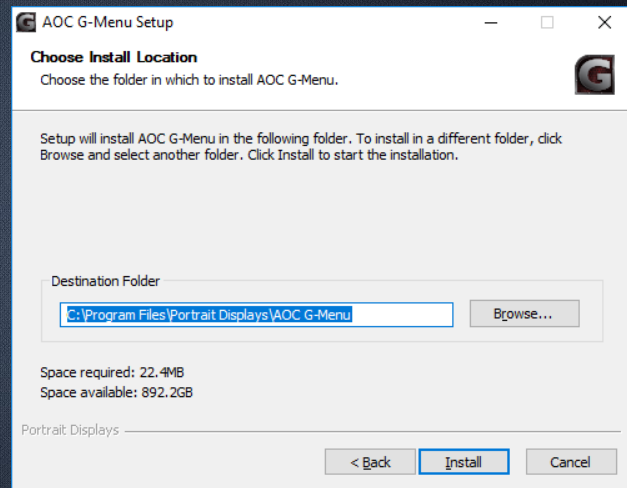
# Install components selection

- “Application” check box (default selected) installs G-Menu
- “Start Menu Shortcut” check box (default selected) creates an entry in the Start Menu
- “Desktop Shortcut” check box (default selected) places a shortcut on the desktop
- “Back” button goes to previous pane (EULA)
- “Next” button will install all components for selected components for G-Menu
- “Cancel” button prompts user if they want to cancel the installation.



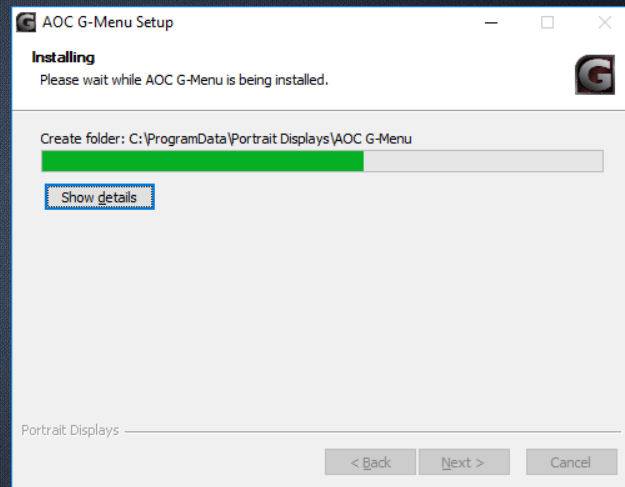
# Installation path

- Allows user to change installation path for G-Menu
- Default path is C:\Program Files\Portrait Displays\AOC G-Menu
- “Back” button goes to previous pane (EULA)
- “Next” button will install the application in the designated folder.
- “Cancel” button prompts user if they want to cancel the installation.



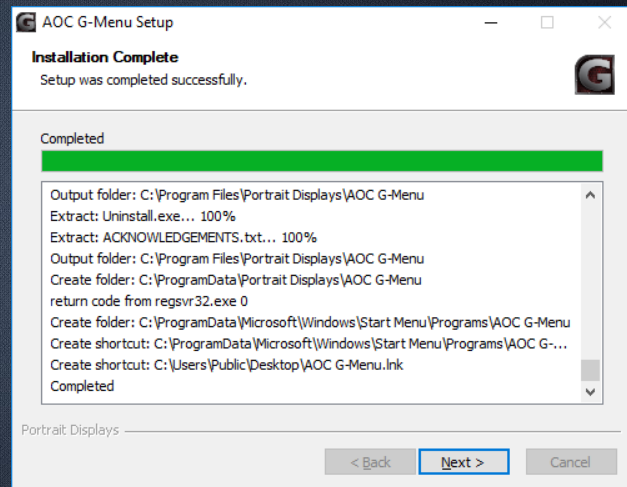
# Installation progress

- Installing
- Status bar shows installation progress



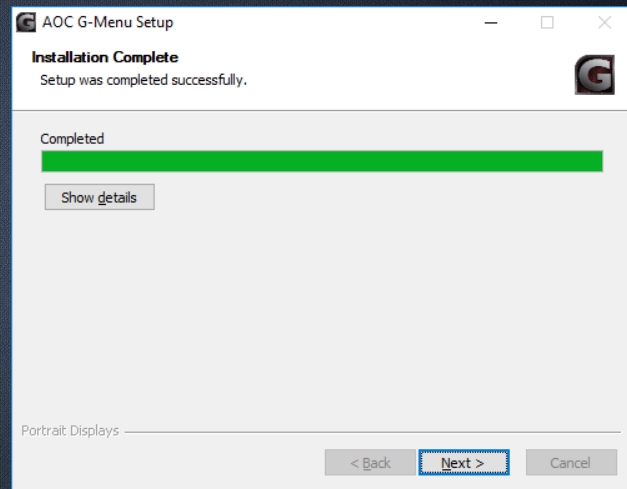
# Installation details log

- Selecting “Show details” expands the dialog to show the files/locations of the components to being installed for G-Menu.



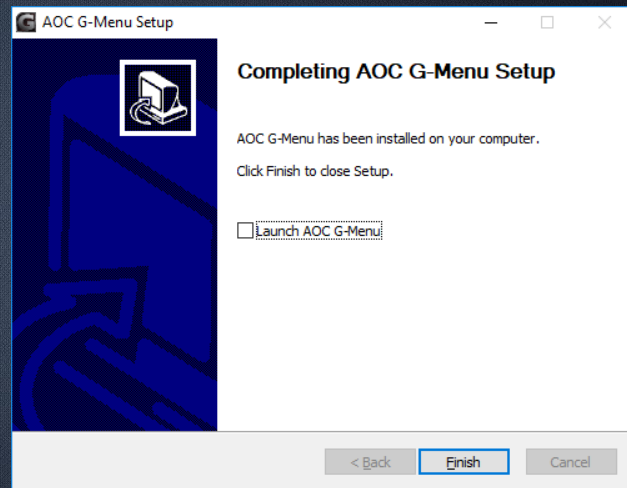
# Installation Complete

- Once the Installation is complete, the “Next” button will advance the user to the “Setup Finish” screen.
- “Back” and “Cancel” buttons are no longer selectable as the program has completed installation.



# Installation Finish and Launch

- Check box “Launch AOC G-Menu” when selected and then selecting Finish will launch the application.
- Unchecked and selecting Finish will close the Setup dialog and require the user to manually launch the application.



# Thank You



For more information contact us:  
[sales@portrait.com](mailto:sales@portrait.com)